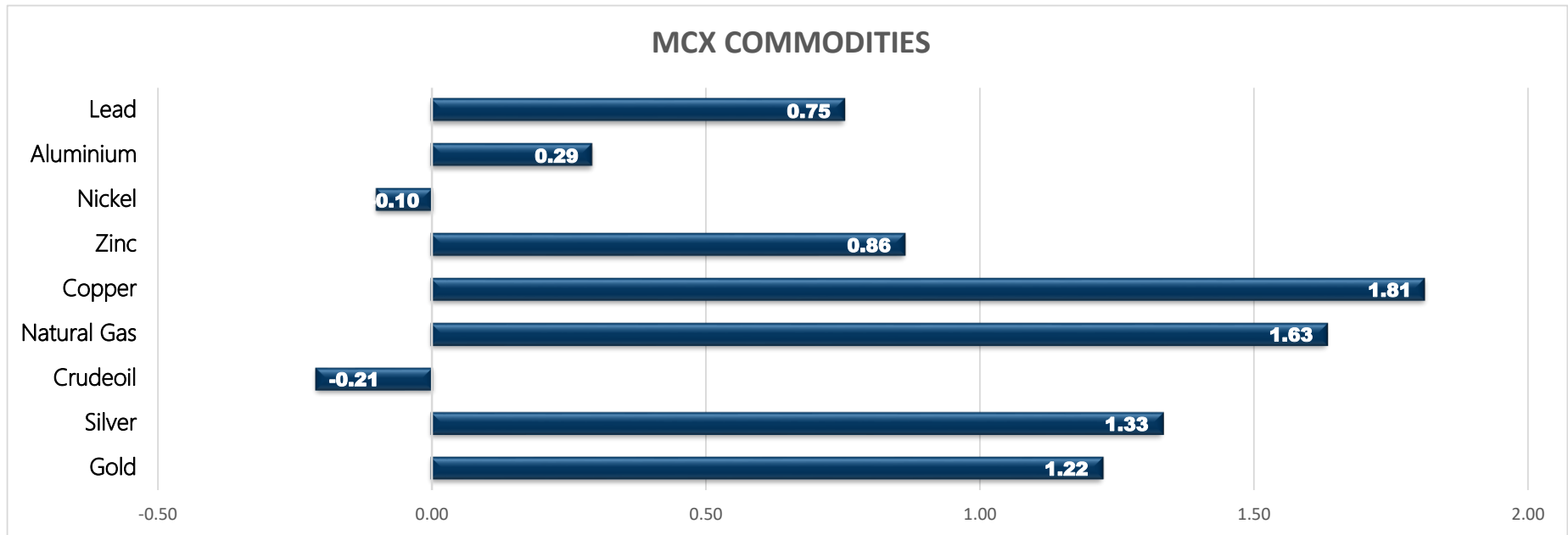


Commodity	Closed	% Change	Commodity	Ltp*	% Change	Economical Data
Gold	47175.00	1.22	Gold\$	1760.22	-0.19	EUR Italian Trade Balance
Silver	68540.00	1.33	Silver\$	25.74	-0.39	EUR Final CPI y/y
Crudeoil	4742.00	-0.21	Crudeoil\$	63.46	0.49	EUR Final Core CPI y/y
Natural Gas	199.50	1.63	Natural Gas\$	2.66	1.53	EUR Trade Balance
Copper	719.15	1.81	Lme Copper	9256.00	-0.58	EUR ECOFIN Meetings
Zinc	229.70	0.86	Lme Zinc	2855.50	-0.51	EUR Eurogroup Meetings
Nickel	1238.10	-0.10	Lme Nickel	16340.00	0.12	USD Building Permits
Aluminium	188.75	0.29	Lme Lead	2019.50	-0.49	USD Housing Starts
Lead	167.30	0.75	Lme Aluminium	2331.00	-0.26	USD Prelim UoM Consumer Sentiment

MCX COMMODITIES



MCX MARKET SYNOPSIS

Contract	Open	High	Low	Close	Rs Chg	% Chg	Volume	OI	% Chg
Crude Oil Apr	4743.00	4772.00	4692.00	4742.00	-10.00	-0.21	41241	3172	-41.57
Crude Oil May	4748.00	4790.00	4714.00	4758.00	-8.00	-0.17	16838	3575	38.67
Crude Oil Jun	4510.00	4761.00	4510.00	4742.00	102.00	2.20	24	6	100.00

Contract	Open	High	Low	Close	Rs Chg	% Chg	Volume	OI	% Chg
Natural Gas Apr	196.90	200.80	194.20	199.50	3.20	1.63	180338	12428	2.87
Natural Gas May	202.40	205.50	199.80	204.90	3.00	1.49	7423	8351	6.25
Natural Gas Jun	205.00	210.80	205.00	210.10	2.30	1.11	442	912	3.17

MCX PIVOT

Contract	Sup - 3	Sup - 2	Sup - 1	Pivot	Res - 1	Res - 2	Res - 3	OI Status
Crude Oil Apr	4618.00	4655.00	4698.00	4735.00	4778.00	4815.00	4858.00	Long Liquidation
Natural Gas Apr	189.00	191.60	195.60	198.20	202.20	204.80	208.80	Fresh Buying

SPREAD SYNOPSIS

Crudeoil					Natural Gas					Spread History			
Month	Rate	Apr	May	Jun	Month	Rate	Apr	May	Jun	Commodity	Max	Min	Avg
Apr	4742.00		16.00	0.00	Apr	199.50		5.40	10.60	Crudeoil	636.00	-39.00	42.00
May	4758.00			-16.00	May	204.90			5.20	Natural Gas	64.10	-19.90	5.00
Jun	4742.00				Jun	210.10							

INTERNATIONAL MARKET SYNOPSIS

Crudeoil Last 4 Day Movement								Pivot		
Date	Open	High	Low	Close	Rs Chg	% Chg		Res - 1	Res - 2	Res - 3
15-Apr-21	62.83	63.57	62.53	63.46	0.31	0.49%		63.84	64.23	64.88
14-Apr-21	60.44	63.44	60.38	63.15	2.97	4.94%		Sup - 1	Sup - 2	Sup - 3
13-Apr-21	59.64	60.59	59.64	60.18	0.48	0.80%		62.80	62.15	61.76
12-Apr-21	59.35	60.77	58.73	59.7	0.38	0.64%				

NaturalGas Last 4 Day Movement								Pivot		
Date	Open	High	Low	Close	Rs Chg	% Chg		Res - 1	Res - 2	Res - 3
15-Apr-21	2.617	2.685	2.583	2.658	0.04	1.53%		2.701	2.744	2.803
14-Apr-21	2.62	2.666	2.609	2.618	-0.001	-0.04%		Sup - 1	Sup - 2	Sup - 3
13-Apr-21	2.554	2.638	2.529	2.619	0.058	2.26%		2.599	2.540	2.497
12-Apr-21	2.53	2.605	2.53	2.561	0.035	1.39%				

CRUDEOIL

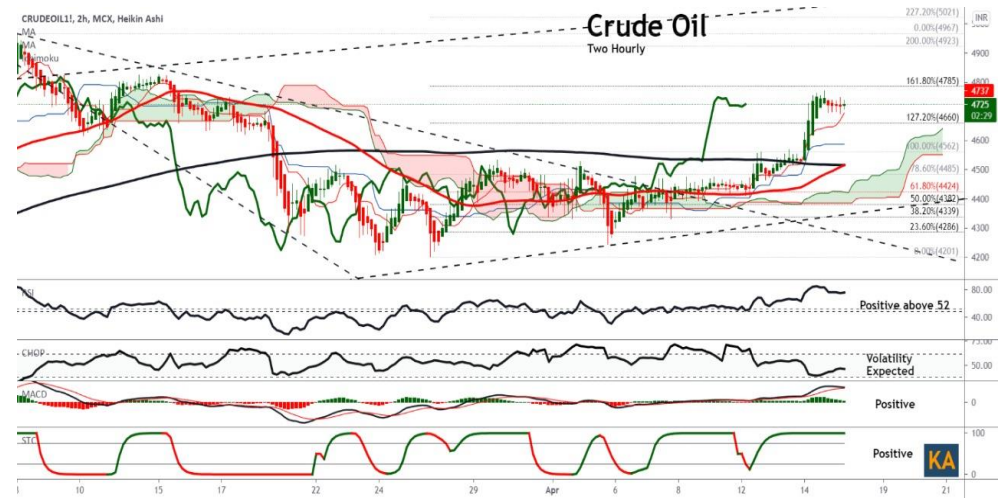
Crude oil trading range for the day is 4655-4815.

Crude oil prices eased on profit booking after prices rallied as IEA and OPEC raised forecasts for oil demand as major economies recover from the pandemic.

Global oil demand and supply are set to be rebalanced in the second half of this year after the evaporation of demand in 2020 as the COVID-19 pandemic raged

OPEC expects demand to rise by 70,000 bpd from last month's forecast and global demand is likely to rise by 5.95 million bpd in 2021

U.S. crude inventories were down by 5.9 million barrels last week, the Energy Information Administration (EIA) said



NATURAL GAS

Natural gas trading range for the day is 191.6-204.8.

Natural gas rose on a slightly smaller than expected weekly storage build and near record liquefied natural gas (LNG) and pipeline exports.

That price increase came despite forecasts for less cold weather through the end of April than previously expected.

The U.S. Energy Information Administration (EIA) said U.S. utilities added 61 bcf of gas into storage

German gas imports fall 5.7% in first two months of 2021



CRUDE OIL PRICE MOVEMENT SINCE 2011

	JAN	FEB	MAR	APR	MAY	JUN	JUL	AUG	SEP	OCT	NOV	DEC	Growth
2011	4229	4444	4744	5047	4631	4241	4237	4081	3995	4516	5219	5296	1208.00
	3.45	5.08	6.75	6.39	-8.24	-8.42	-0.09	-3.68	-2.11	13.04	15.57	1.48	28.56
2012	4927	5227	5274	5514	4929	4695	4921	5358	4887	4666	4838	5015	-281.00
	-6.97	6.09	0.90	4.55	-10.61	-4.75	4.81	8.88	-8.79	-4.52	3.69	3.66	-5.31
2013	5202	5076	5400	5014	5273	5763	6409	7246	6440	5996	5839	6122	1107.00
	3.73	-2.42	6.38	-7.15	5.17	9.29	11.21	13.06	-11.12	-6.89	-2.62	4.85	22.07
2014	6169	6371	6119	6015	6106	6337	6006	5831	5673	4931	4210	3369	-2753.00
	0.77	3.27	-3.96	-1.70	1.51	3.78	-5.22	-2.91	-2.71	-13.08	-14.62	-19.98	-44.97
2015	2855	3064	3025	3790	3869	3776	3038	3230	2979	3068	2798	2493	-876.00
	-15.26	7.32	-1.27	25.29	2.08	-2.40	-19.54	6.32	-7.77	2.99	-8.80	-10.90	-26.00
2016	2286	2321	2572	3035	3333	3304	2782	3003	3212	3153	3377	3541	1048.00
	-8.30	1.53	10.81	18.00	9.82	-0.87	-15.80	7.94	6.96	-1.84	7.10	4.86	42.04
2017	3614	3566	3284	3174	3127	2968	3183	3038	3373	3528	3687	3850	309.00
	2.06	-1.33	-7.91	-3.35	-1.48	-5.08	7.24	-4.56	11.03	4.60	4.51	4.42	8.73
2018	4112	4093	4234	4583	4517	5086	4734	4959	5335	4892	3576	3170	-680.00
	6.81	-0.46	3.44	8.24	-1.44	12.60	-6.92	4.75	7.58	-8.30	-26.90	-11.35	-17.66
2019	3869	4090	4185	4467	3775	4095	4032	3958	3880	3853	3980	4386	1216.00
	22.05	5.71	2.32	6.74	-15.49	8.48	-1.54	-1.84	-1.97	-0.70	3.30	10.20	38.36
2020	3683	3263	1689	1315	2564	3015	3023	3145	2934	2642	3326	3524	-862.00
	-16.03	-11.40	-48.24	-22.14	94.98	17.59	0.27	4.04	-6.71	-9.95	25.89	5.95	-19.65
2021	3820	4604	4384										860.00
	8.40	20.52	-4.78										24.40
Average	-0.72	3.54	-2.78	3.32	6.10	2.90	-2.01	2.42	-1.04	-2.15	1.38	-0.24	Average

NATURAL GAS PRICE MOVEMENT SINCE 2011

Year	JAN	FEB	MAR	APR	MAY	JUN	JUL	AUG	SEP	OCT	NOV	DEC	Growth
2011	200.20	185.70	197.40	208.30	211.40	196.00	185.10	185.60	184.40	192.80	187.70	161.50	-36.30
	1.21	-7.24	6.30	5.52	1.49	-7.28	-5.56	0.27	-0.65	4.56	-2.65	-13.96	-18.35
2012	125.40	128.70	110.20	120.70	140.20	155.90	178.50	155.50	176.10	201.90	195.80	184.90	23.40
	-22.35	2.63	-14.37	9.53	16.16	11.20	14.50	-12.89	13.25	14.65	-3.02	-5.57	14.49
2013	178.20	192.10	221.90	232.60	227.70	214.80	210.80	239.50	223.80	223.00	246.70	265.50	80.60
	-3.62	7.80	15.51	4.82	-2.11	-5.67	-1.86	13.61	-6.56	-0.36	10.63	7.62	43.59
2014	302.60	288.10	262.50	292.60	271.20	269.90	237.60	246.90	257.80	239.90	259.30	189.10	-76.40
	13.97	-4.79	-8.89	11.47	-7.31	-0.48	-11.97	3.91	4.41	-6.94	8.09	-27.07	-28.78
2015	168.40	167.70	167.00	175.60	169.80	179.90	174.80	178.70	166.70	152.00	150.30	155.90	-33.20
	-10.95	-0.42	-0.42	5.15	-3.30	5.95	-2.83	2.23	-6.72	-8.82	-1.12	3.73	-17.56
2016	155.90	118.10	129.90	143.80	155.00	197.30	192.90	194.40	194.00	204.10	229.60	252.00	96.10
	0.00	-24.25	9.99	10.70	7.79	27.29	-2.23	0.78	-0.21	5.21	12.49	9.76	61.64
2017	212.80	185.00	205.80	212.10	198.60	193.80	180.00	194.80	198.40	187.80	197.10	189.70	-62.30
	-15.56	-13.06	11.24	3.06	-6.36	-2.42	-7.12	8.22	1.85	-5.34	4.95	-3.75	-24.72
2018	190.50	175.90	179.40	183.80	199.50	200.80	192.80	206.90	218.00	241.60	317.40	212.20	22.50
	0.42	-7.66	1.99	2.45	8.54	0.65	-3.98	7.31	5.36	10.83	31.37	-33.14	11.86
2019	201.50	199.50	186.70	180.80	172.30	160.50	155.10	164.00	165.80	187.00	167.20	155.50	-56.70
	-5.04	-0.99	-6.42	-3.16	-4.70	-6.85	-3.36	5.74	1.10	12.79	-10.59	-7.00	-26.72
2020	132.40	124.30	131.50	144.20	135.90	130.40	135.60	190.70	186.50	247.70	216.70	182.10	26.60
	-14.86	-6.12	5.79	9.66	-5.76	-4.05	3.99	40.63	-2.20	32.82	-12.52	-15.97	17.11
2021	191.50	205.90	191.10										9.00
	5.16	7.52	-7.19										4.94
Average	-4.94	-5.63	0.10	5.30	1.84	2.21	-1.39	4.55	0.47	6.12	3.71	-7.57	Average

The logo for Kedia Advisory, featuring the text "KEDIA ADVISORY" in a bold, sans-serif font. "KEDIA" is in yellow and "ADVISORY" is in white, both set against a dark blue rectangular background.

KEDIA STOCKS & COMMODITIES RESEARCH PVT LTD.
Mumbai. INDIA.

For more details, please contact:
Mobile: +91 9323406035 / 9320096333 / 9619551022
Email: info@kediaadvisory.com
URL: www.kediaadvisory.com
SEBI REGISTRATION NUMBER - INH000006156

General Disclaimers: This Report is prepared and distributed by Kedia Stocks & Commodities Research Pvt Ltd. for information purposes only. The recommendations, if any, made herein are expression of views and/or opinions and should not be deemed or construed to be neither advice for the purpose of purchase or sale through KSCRPL nor any solicitation or offering of any investment /trading opportunity. These information / opinions / views are not meant to serve as a professional investment guide for the readers. No action is solicited based upon the information provided herein. Recipients of this Report should rely on information/data arising out of their own investigations. Readers are advised to seek independent professional advice and arrive at an informed trading/investment decision before executing any trades or making any investments. This Report has been prepared on the basis of publicly available information, internally developed data and other sources believed by KSCRPL to be reliable. KSCRPL or its directors, employees, affiliates or representatives do not assume any responsibility for, or warrant the accuracy, completeness, adequacy and reliability of such information / opinions / views. While due care has been taken to ensure that the disclosures and opinions given are fair and reasonable, none of the directors, employees, affiliates or representatives of KSCRPL shall be liable for any direct, indirect, special, incidental, consequential, punitive or exemplary damages, including lost profits arising in any way whatsoever from the information / opinions / views contained in this Report. The possession, circulation and/or distribution of this Report may be restricted or regulated in certain jurisdictions by appropriate laws. No action has been or will be taken by KSCRPL in any jurisdiction (other than India), where any action for such purpose(s) is required. Accordingly, this Report shall not be possessed, circulated and/ or distributed in any such country or jurisdiction unless such action is in compliance with all applicable laws and regulations of such country or jurisdiction. KSCRPL requires such recipient to inform himself about and to observe any restrictions at his own expense, without any liability to KSCRPL. Any dispute arising out of this Report shall be subject to the exclusive jurisdiction of the Courts in India.